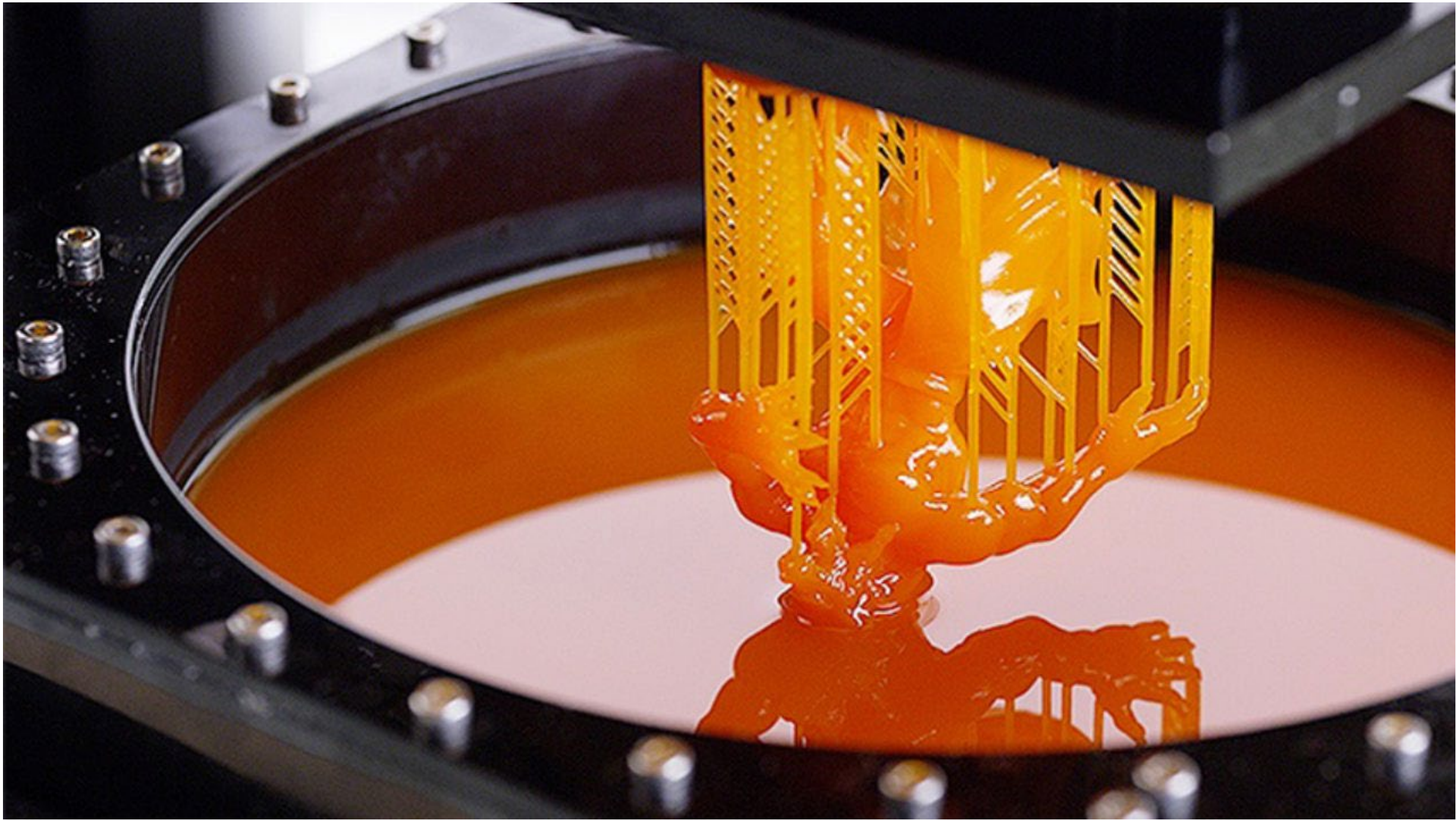


Digital Material Culture

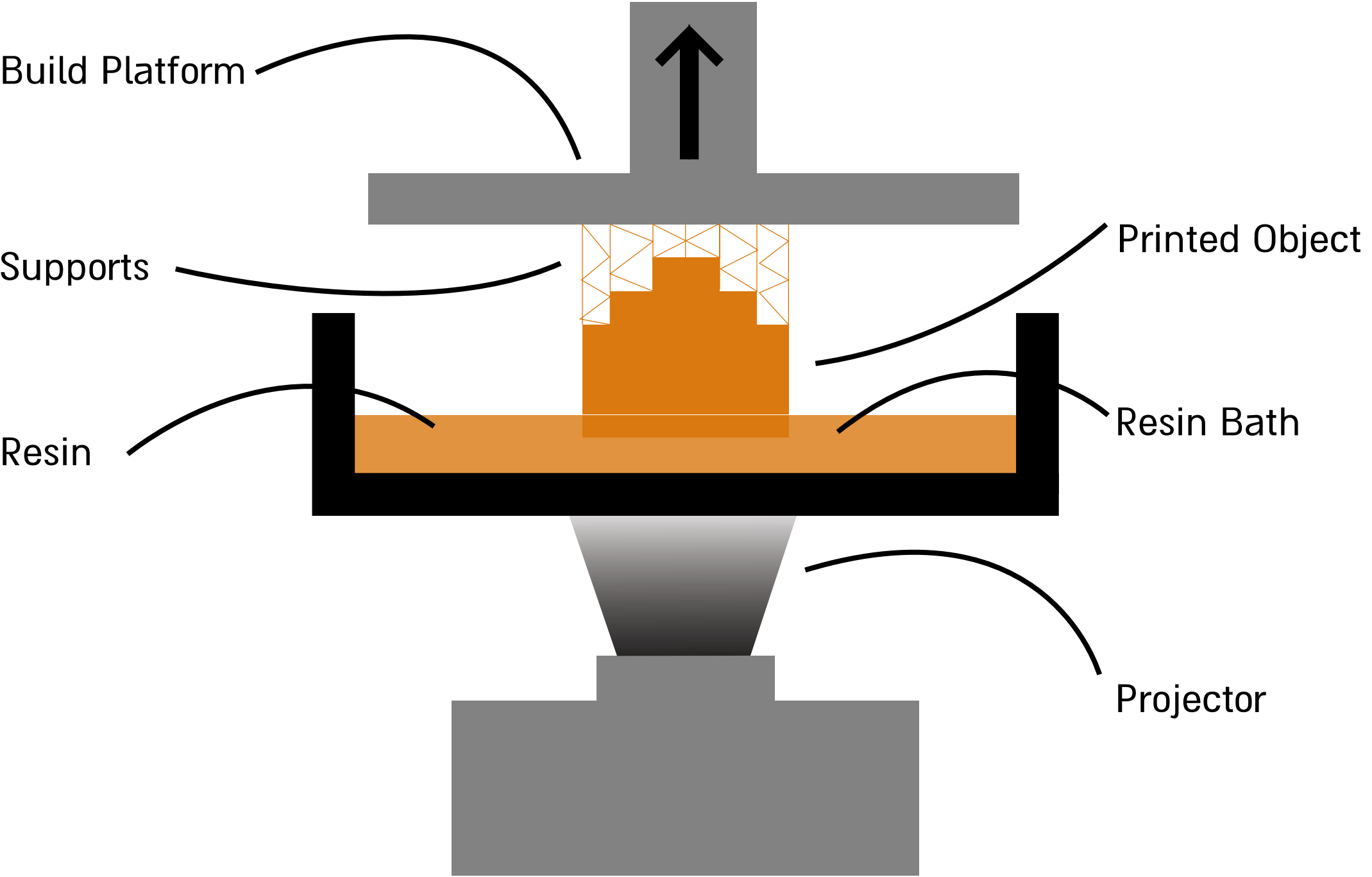
3D Printing Workshop 2022–2023

—

tutorial 2

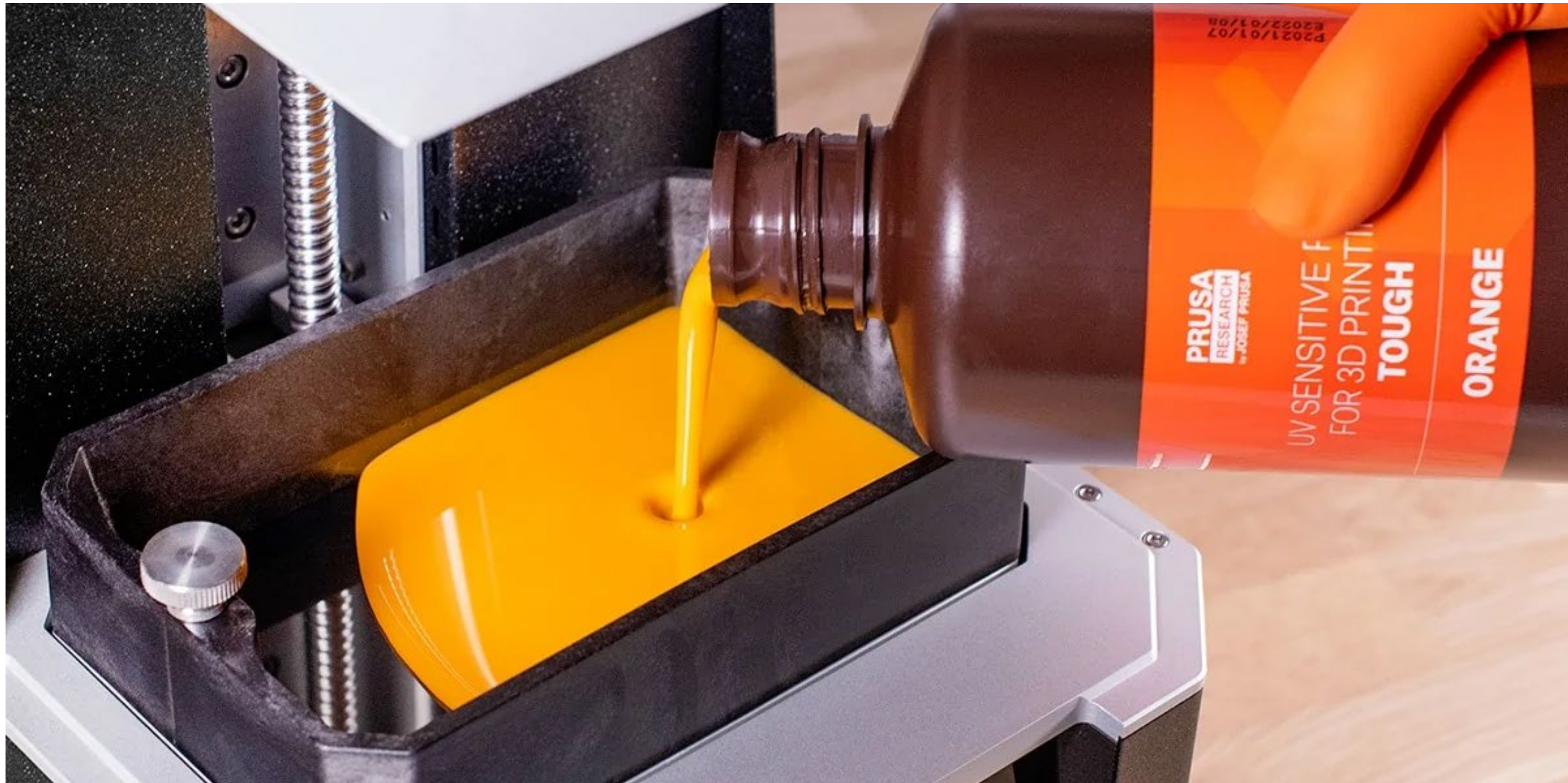


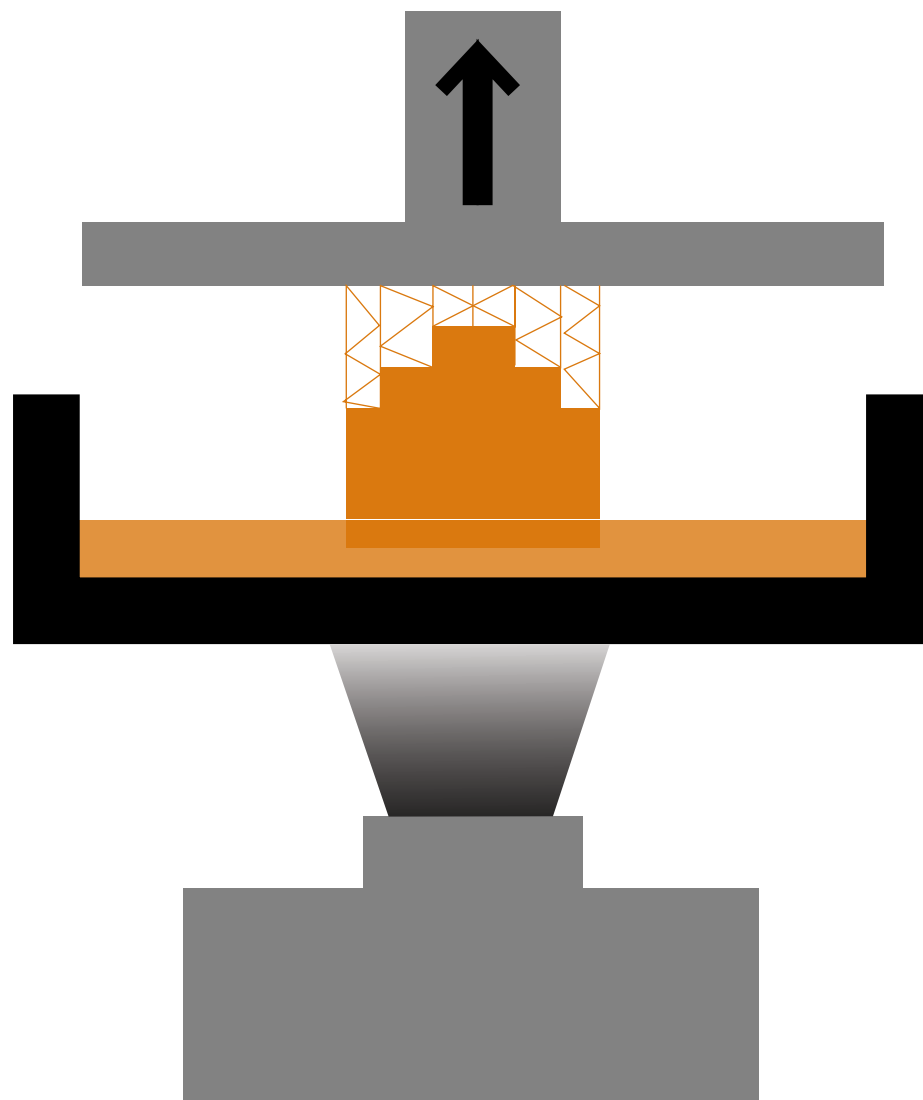
SLA 3D Printing
Stereolithography



Resin

a photo-sensitive liquid-like material is used in resin printing, known as 3D printing resin. It cures when exposed to a light source of a particular wavelength, resulting in a solid 3D print.

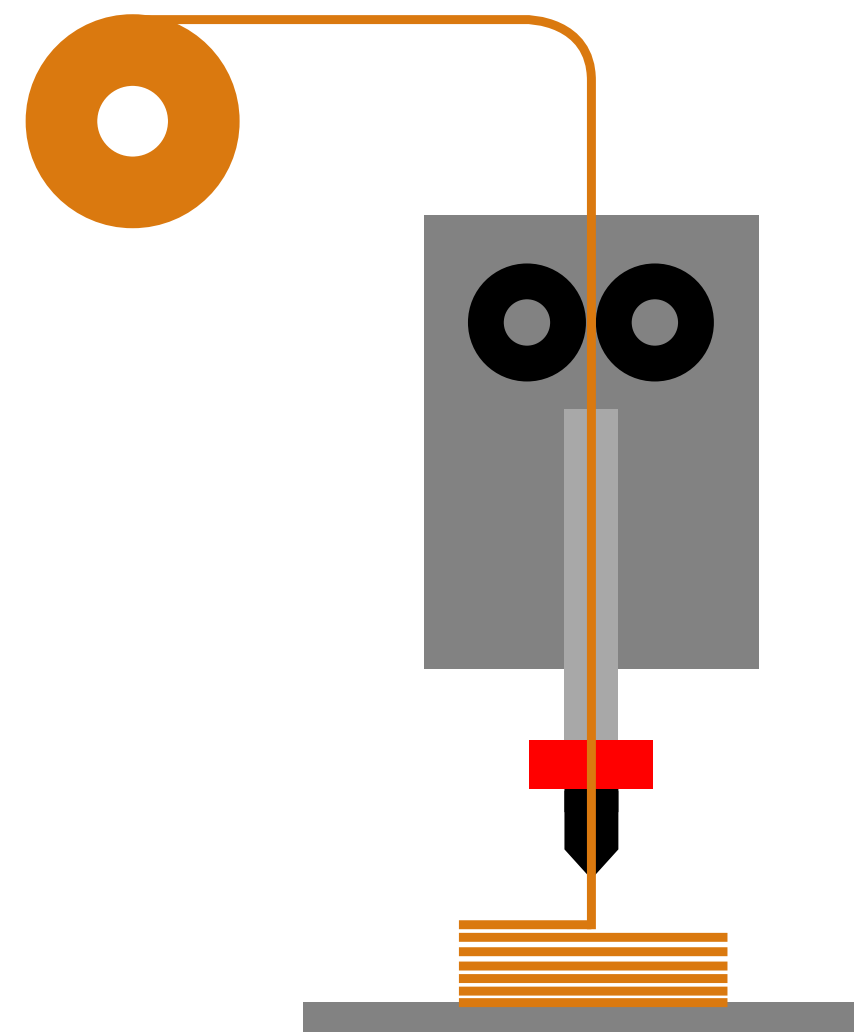




SLA

create chemical bonds between layers
Tends to be slower than FDM
needs post-Processing
very good with fine details

VS.



FDM

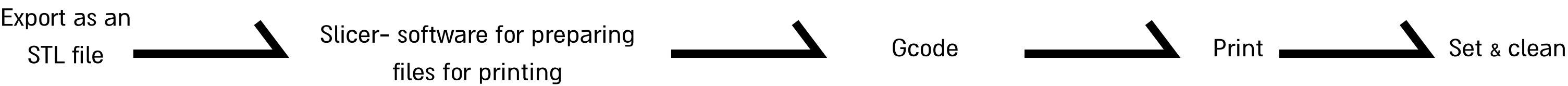
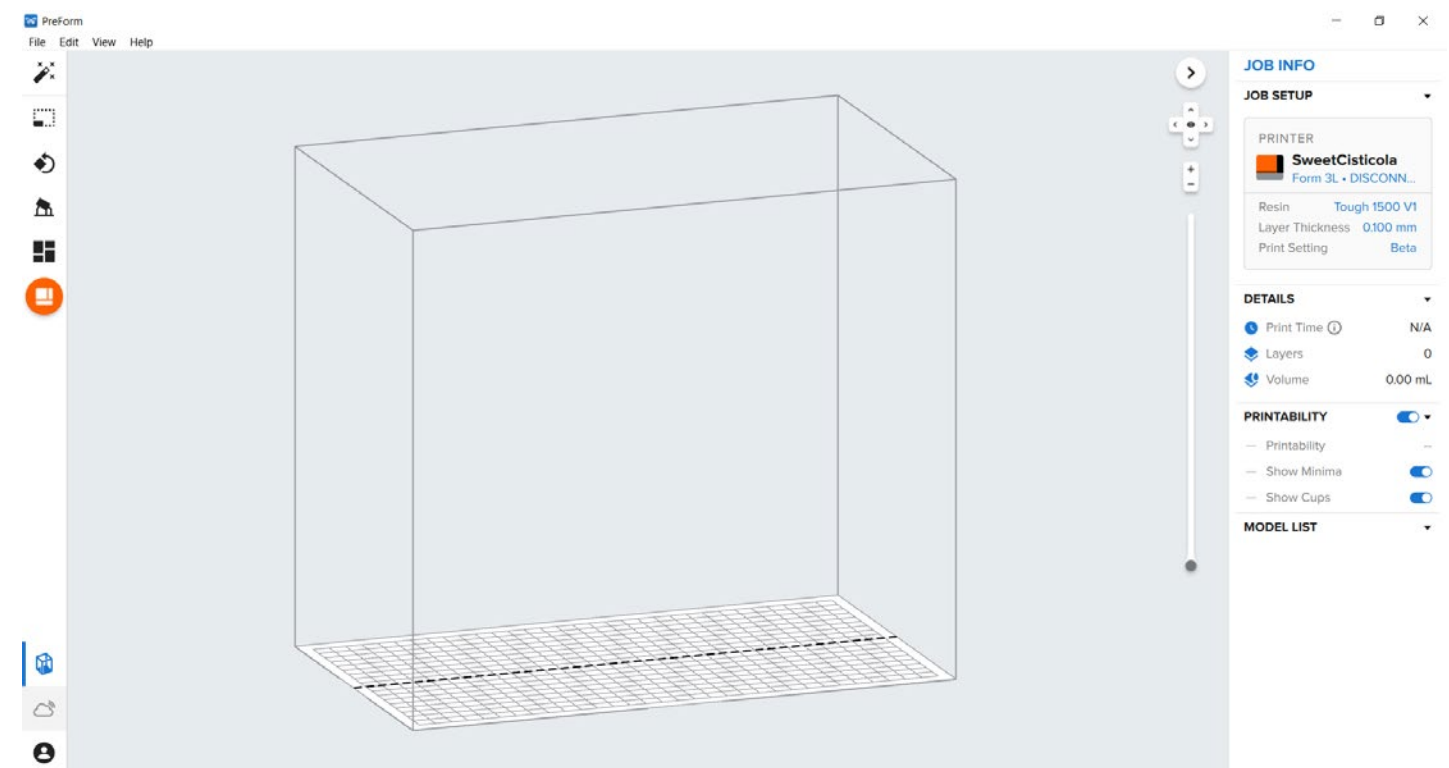
mechanical bond between layers
Tends to be faster than SLA
Almost no need in post-Processing
limited with fine details

formlabs 3L
TOUGH 1500 resin



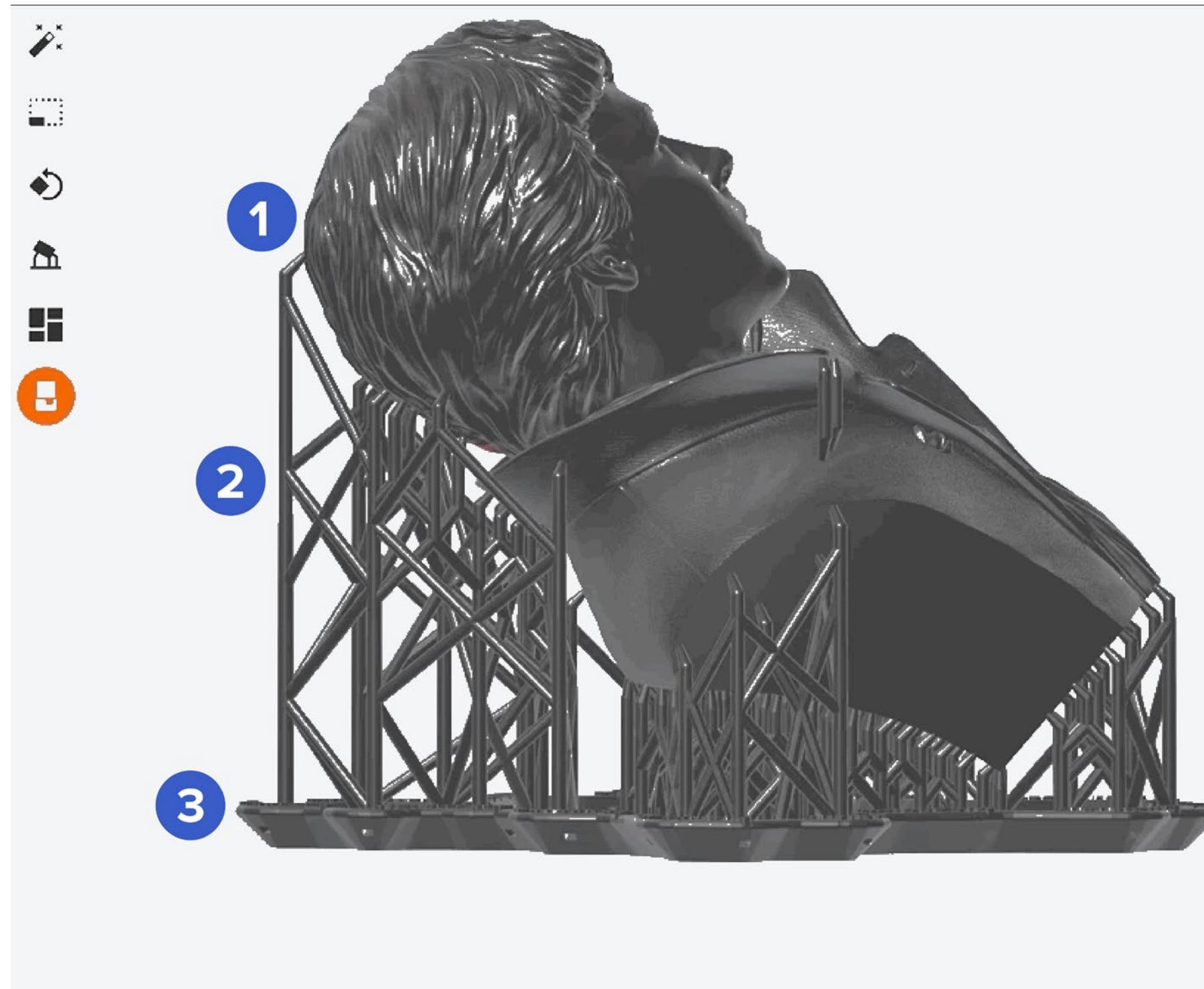
PreForm slicer

[Download PerForm](#)
[PreForm slicer tutorial](#)



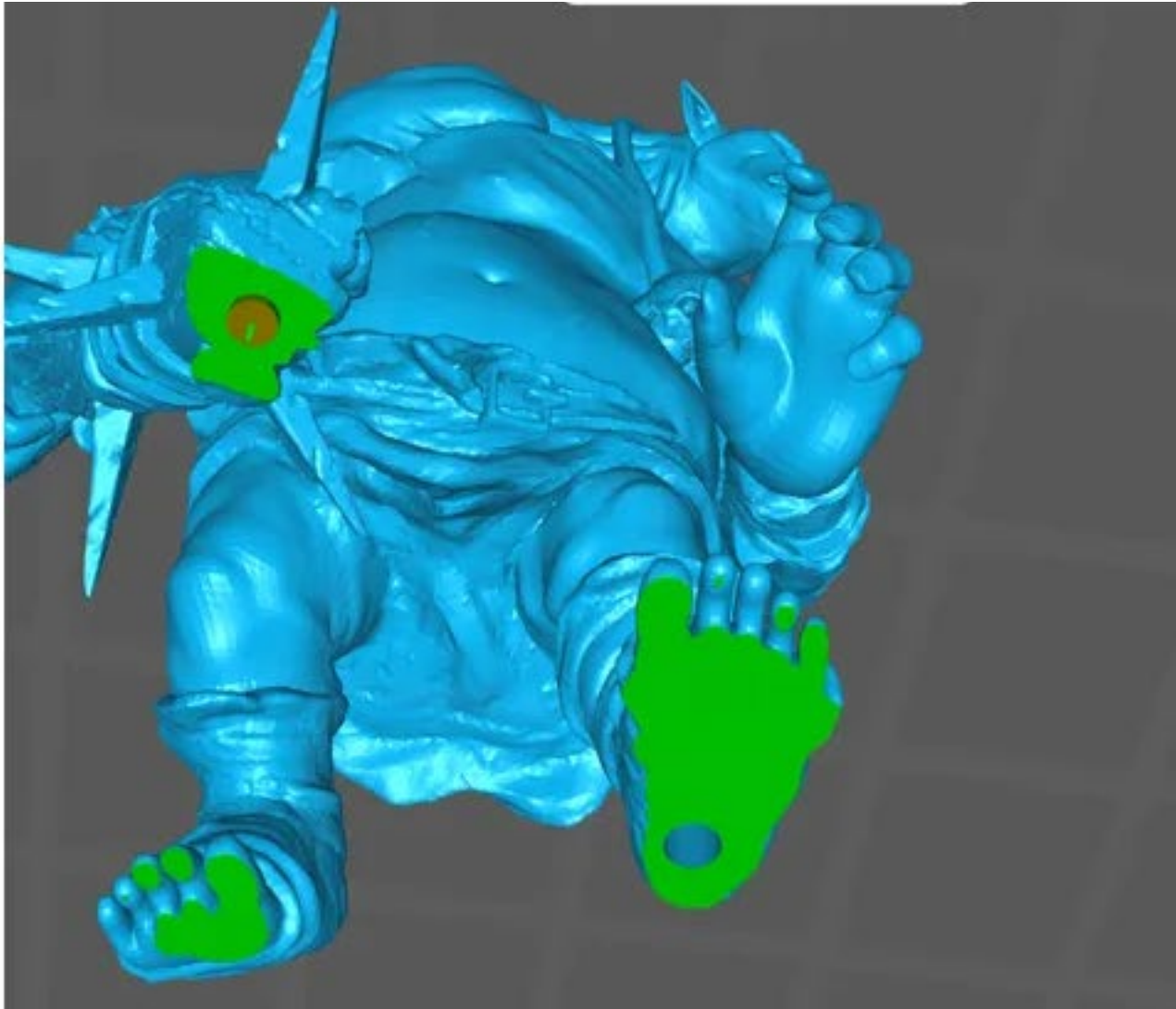
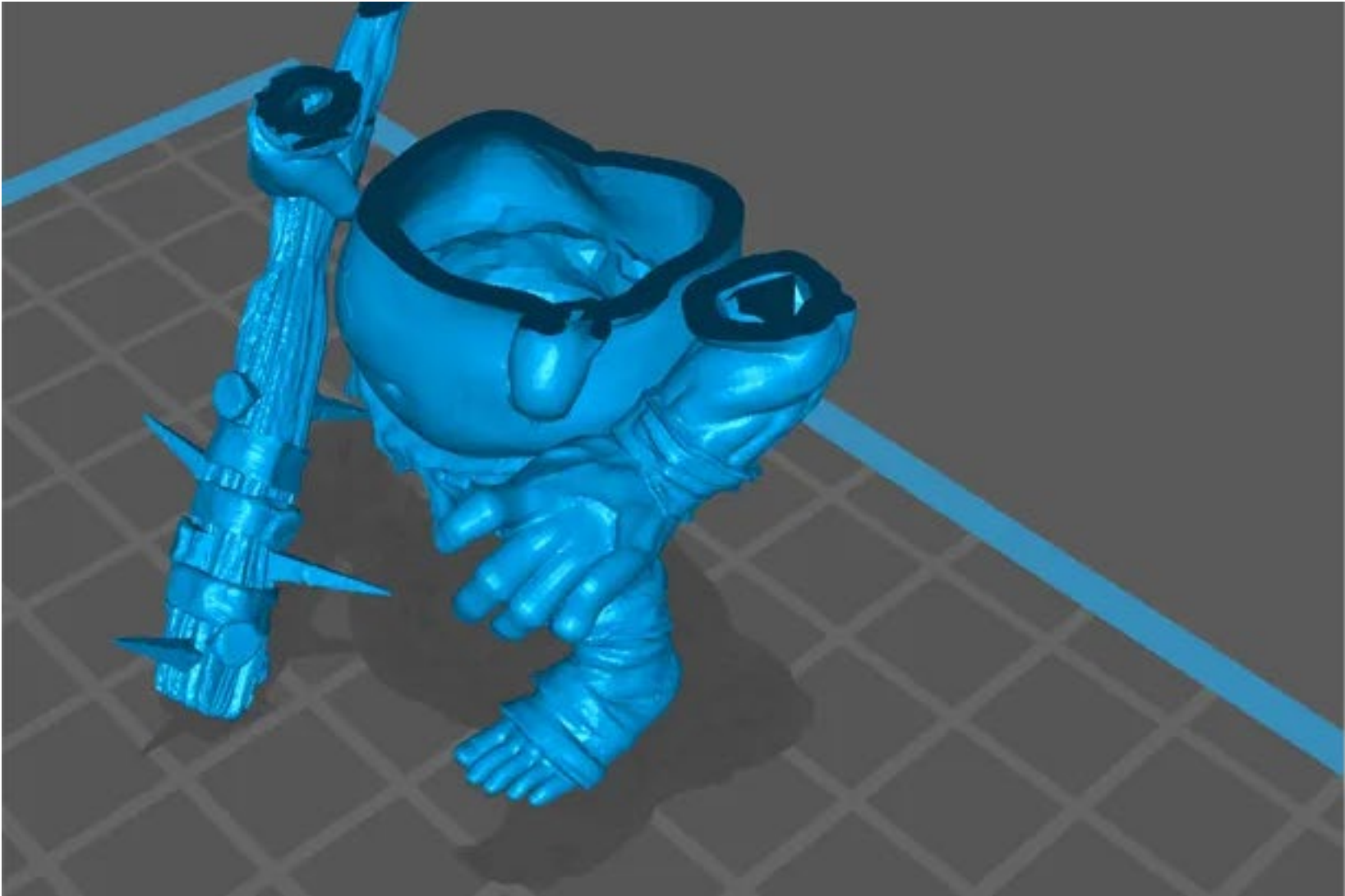
Support

[How supports work in SLA printing](#)



Support structures include: (1) touchpoints, (2) scaffolding, and a (3) raft

Drain Holes



Demonstration